

# Outer Dowsing Offshore Wind

## Environmental Statement

### Chapter 5 EIA Methodology

### Volume 2 Figures

Date: March 2024

Document Reference: 6.2.5.1

Pursuant to APFP Regulation: 5(2)(a)

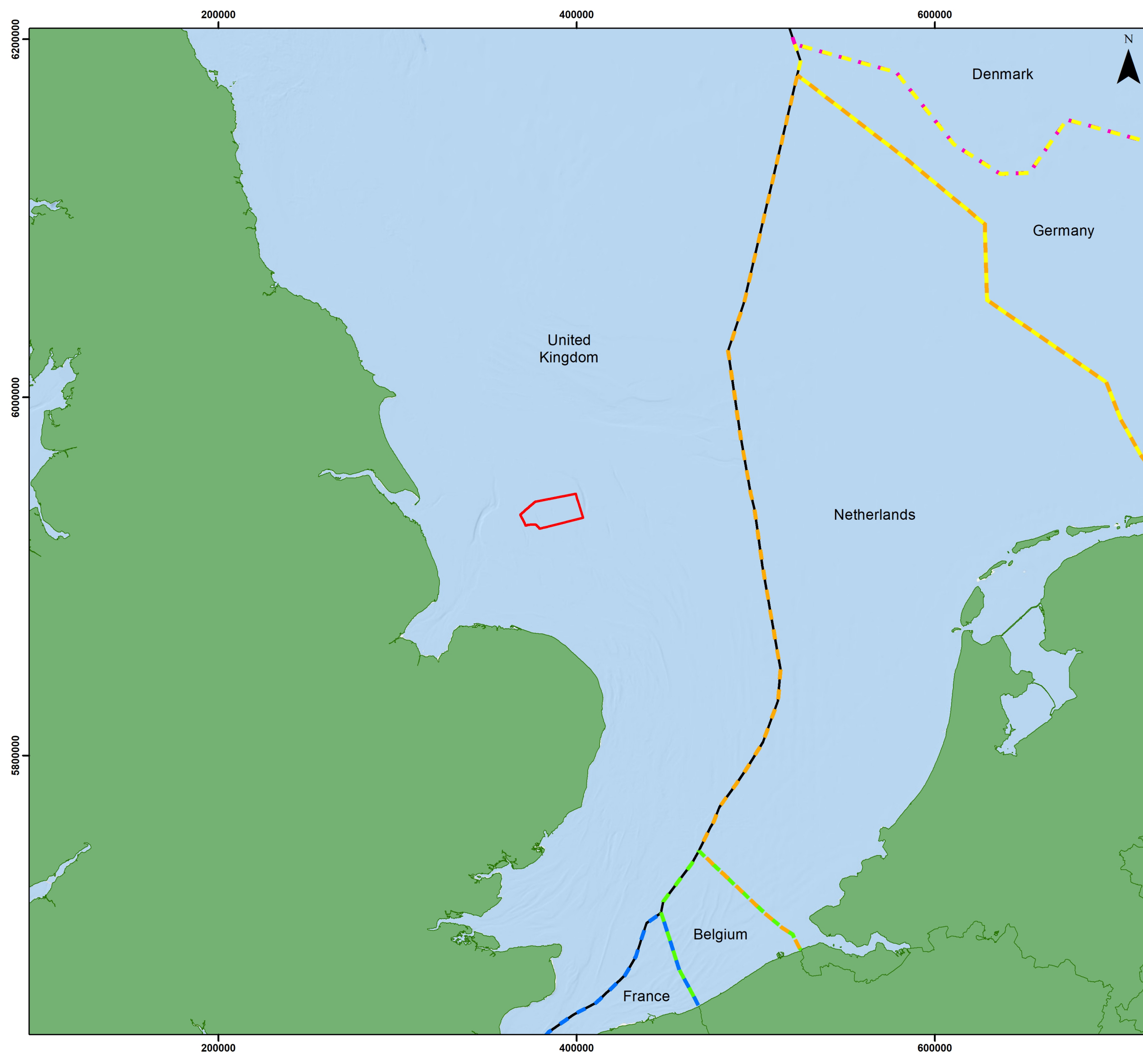
Rev: 1.0



Company:	<b>Outer Dowsing Offshore Wind</b>	Asset:	<b>Whole Asset</b>			
Project:	<b>Whole Wind Farm</b>	Sub Project/Package:	Whole Asset			
Document Title or Description:	Chapter 5 EIA Methodology					
Internal Document Number:	PP1-ODOW-DEV-CS-FIG-0005	3 <sup>rd</sup> Party Doc No (if applicable):	N/A			
Outer Dowsing Offshore Wind accepts no liability for the accuracy or completeness of the information in this document nor for any loss or damage arising from the use of such information.						
<b>Rev No.</b>	<b>Date</b>	<b>Status / Reason for Issue</b>	<b>Author</b>	<b>Checked by</b>	<b>Reviewed by</b>	<b>Approved by</b>
Rev 1.0	March 2024	DCO Application	GoBe	GoBe	Shepherd and Wedderburn	ODOW

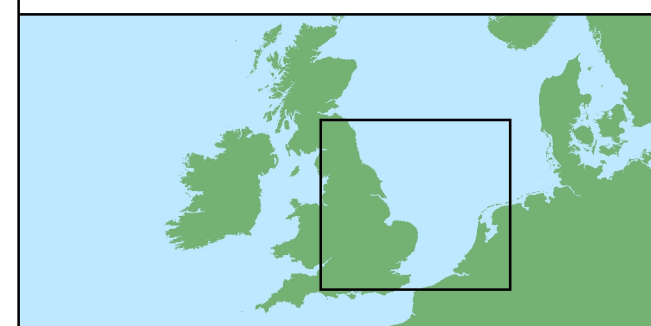
## Table of Figures

- Figure 5.1 The proximity to the EEZ of adjacent states to the Project Array Area (Document Reference: 6.2.5.1)



### Legend

- Array Area
- Exclusive Economic Zone (EEZ)
  - Belgium
  - Denmark
  - France
  - Germany
  - Netherlands
  - United Kingdom



Coordinate System: WGS 1984 UTM Zone 31N  
 0 50 100 km  
 Scale: 1:2,000,000

Environmental Statement  
 The proximity to the EEZ of adjacent states to the Project Array Area  
 Figure 6.2.5.1

OUTER DOWSING OFFSHORE WIND  
 GoBe

Date: 08/01/2024  
 Produced By: BPHB  
 Revision: 0.1

Contains ESRI Basemapping; Esri, Garmin, GEBCO, NOAA NGDC, and other contributors